

2019 MISSOURI Fall Handicap

September 21-29, 2019

2018 PAYOFF OVER \$500,000

***\$18,500 GUARANTEED MONEY**

325 TOTAL TROPHIES

**SHOOTERS APPRECIATION DINNER
FRIDAY SEPTEMBER 27**

**50 FLATS OF SHELLS
DONATED BY GRAF & SONS**

**1,100 HANDICAP
700 SINGLES
600 DOUBLES**

ALL TRAPS HAVE BEEN PROFESSIONALY RECONDITIONED

~
WHITE FLYER TARGETS

**The Homegrounds of the
Missouri Trapshooters Association, Inc.
Linn Creek, Missouri**

5-9-19a

5-15-19a

Correction made 5-17-19a

Correction made 7-8-19tb

INTRODUCING THE NEW
**INVICTUS III
TRAP**



**CAESAR
GUERINI**
410.901.1131
GUERINIUSA.COM

MTA GUN CLUB

is located 4 miles east of Camdenton, MO on Highway 54,
then 6 miles east on Highway "A"



For Program & Accommodation Information:

Lyndle Pruett, Manager
51 Trapshooters Road
Linn Creek, MO 65052

Gun Club phone: 573-346-2449 • fax: 573-346-4507
Web page: www.motraps.com • email: motraps@gmail.com

For Resort & Motel Information:

Lake area Chamber of Commerce
Lake Ozark, MO 65049
phone: 1-800-451-4117 or 573-964-1008

Camdenton Chamber of Commerce
phone: 1-800-769-1004

Private Plane Accommodations:

Lee C. Fine Airport, Lake of the Ozarks State Park
Linn Creek – Grand Glaize Airport and Camdenton Municipal Airport

Welcome to Missouri's Lake of the Ozarks!

Whether you knew it or not, the 60 trap MTA Gun Club at Linn Creek is located right in the middle of one of the premier vacation destinations in the United States...the Lake of the Ozarks!

**TO PLAN YOUR MISSOURI TRAPSHOOTING VACATION,
VISIT THESE WEBSITES:**

www.funlake.com ~~ www.lakeareachamber.com
www.lakelinks.com ~~ www.camdentonchamber.com

*The Officers and Board of Directors, wish to express their
gratitude to the Shooters for their continued support of the
Missouri Trapshooters Association*

Turns Clay Into Dust And Lead Into Gold



The New Choice Of Champion Shooters

17% Less Kick
SoftCell™ wad technology
absorbs felt recoil

More Clay Crushing Energy
Pellets offer the hardness of 5 percent
antimony lead yet maintain density

Best Primer Reliability
Rigid PrimerLock™ head
maximizes primer sensitivity

Gold Medal Grand™: Available in seven new 2³/₄-inch 12-gauge loads with Federal Premium® Ammunition's classic paper hull, as well as ten 2³/₄-inch 12-gauge plastic hull loads.





FABARM
USA

**THE WHOLE PACKAGE.
EXCEPTIONAL VALUE.**

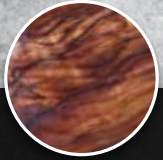
AXIS RS12

Integrated Recoil Reducer

AXIS RS12 TRAP

NEW AXIS GREY TRAP

TRIBORE HP™ Free-floating barrels for the
ultimate in ballistic performance.



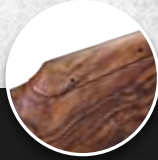
TRIWOOD™
enhanced finish
is water resistant



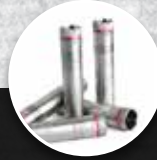
Adjustable
Competition Trigger
for light, crisp pulls



Adjustable Rib
on All Barrels for
Point-of-Impact



Micro-Metric 3D™
Adjustable Comb
Standard



5 EXIS HP™
Competition
Chokes

410.901.1260

FABARMUSA.COM

John Farrell



REAL ESTATE CO.
JohnFarrell.com



CONGRATULATIONS
Missouri Trapshooters Association
ON 51 YEARS!



"Our New Customers Become Our Old Friends"

Since 1984

573.348.2181 • 800.318.2181

John Farrell Real Estate

5750 Business 54 (Osage Beach Parkway)
Osage Beach, MO 65065

We support the Missouri Trapshooters Association and all of its participants

MTA DIRECTORS

WESTERN ZONE

Randall Crawford
Steve Ricketts
Randy Stitt

CENTRAL ZONE

Rick Fuller
Steve Fuller
Rick McGaughey

EASTERN ZONE

Randy Buhr
Zach Nannini
Marvin Beumer

OFFICERS

PRESIDENT

JOHN FARRELL

1ST VICE-PRESIDENT

Tony Shockley

ATA DELEGATE

Steve Ricketts

SECRETARY

Tommy Roberts

TREASURER

Rick Fuller

2ND VICE-PRESIDENT

Todd Albers

EX-OFFICIO

Steve Ricketts

CERTIFICATION OF THIS SHOOT

This certifies that the MTA Gun Club of Linn Creek, Missouri, has been authorized to hold a Registered Shoot on September 21-29, 2019. ATA rules will govern this shoot and the scores will be included in the official record.

RULES GOVERNING THIS SHOOT

1. Contestants may shoot for targets only but will not be eligible for trophies, added money or allowed to enter options.
2. The management reserves the right to refuse the entry of, or to disqualify any shooter who in their opinion will interfere with the harmony of this shoot.
3. Many popular brands of shells may be purchased from the club. Shooters may use reloads for all events. No shell sales except by MTA.
4. The club is not responsible in case of accident or theft.
5. Shooters will be responsible for checking their scores and notifying management of any discrepancies. For purses, options and trophies, all scores are final 30 minutes after completion of the event.
6. Scores will be posted on shootscoreboard.com each day.

FOOD WILL BE SERVED ON THE GROUNDS

Dogs must be on a leash & controlled at all times.

No pets allowed in the clubhouse

**THERE WILL BE NO ENTRY REFUNDS OR
WITHDRAWALS UNLESS AN EVENT IS CANCELLED**

***"Congratulations for
51 years of MTA!"***

Quail's Nest Inn & Suites



At Quail's Nest Inn & Suites everything is minutes away. Over a dozen restaurants and lounges within walking distance. The Osage Beach Premium Outlets are next-door. In fact, we have a private sidewalk that leads directly to the Premium Outlets store area. Our goal is to help you enjoy your stay, every day, at

A Few of Our Amenities:

Special Spring/Fall Trapshoot Rates
Traditional Rooms 1 King or 2 Queens • Deluxe Rooms 1 King, 2 Queens & Suites
Complimentary Daily Continental Breakfast
Heated Indoor Pool and Hot Tub
Free Wi-Fi

LAKE OF THE OZARKS

4644 Osage Beach Parkway • Osage Beach, Missouri 65065
573-348-2834 - 800-700-1006

Proud to win it...



**With 50 years in the shooting industry, let us
customize a trophy package for your next shoot.**



**Proud to
own it...**

**Range Bags
Shell Pouches
Awards
Accessories**



Proud Sponsor



Proud to pass it on.

800.728.5184 • ShamrockLeathers.com • Contact@ShamrockLeathers.com

ANNOUNCEMENTS

CLASSIFICATION, CASHIERING & SQUADDING
SATURDAY thru SUNDAY, SEPTEMBER 21-29, 8:00 am
SUNDAY, SEPTEMBER 29, 8:00 am - LAST FLIGHT

Practice Traps open beginning September 21, 8:00 AM

2019 ATTENDANCE PINS WILL BE GIVEN TO ALL SHOOTERS.

MISSING SQUAD PENALTY: Any shooter missing their squad and desiring to re-enter the event shall pay a \$10.00 penalty.

MAKE-UPS: A maximum of 50 targets can be made up per event. If you miss your squad for more than 50 targets, you must be re-squadded.

CARRY-OVERS: Ties for trophies in Singles and Doubles events will be carried over by sub-event to the next like event. Unless specified otherwise, shoot-offs will be for trophies only and will be combined if possible. Handicap ties will be determined daily.

TROPHIES: ATA rules will be used to determine winners of ALL TROPHIES regardless of who furnishes the trophies. ATA rules regarding “fall backs” will be used to determine ALL winners.

SHOOT-OFFS: Shooters will be called 3 times for shoot-offs. A shooter who fails to appear will forfeit. If no shoot-off contestants appear, a winner will be determined by management.

SUB-JUNIORS, JUNIORS & JUNIOR GOLD: Entry fee is \$29.00 per 100. Eligible for all options and added money—must have 500 registered targets in each discipline or shoot penalty yardage or class.

ATA RULES: The Amateur Trapshooting Association rules will govern all points not otherwise provided.

SPECIAL CATEGORY SHOOTERS: All Lady I, Lady II, Sub-Juniors, Juniors, Junior Gold, Sub-Veterans, Veterans and Senior Veterans desiring to compete for trophies in these categories must properly declare their category at time of classification. Without such declaration, the shooter will not be allowed to compete for applicable special category trophies. A shooter eligible for a special category designation is not required to declare a special category. It is the shooter's responsibility to verify proper classification before leaving the classification desk. The declaration is binding for the duration of the shoot. A shooter desiring to obtain All American points for a special category must be classified in the special category. If you declare your category you will be entitled to the added money in that event in conjunction with your score (money goes with the score). You will still be able to take championship or category trophies. You will be able to shoot for added money.

PAYOUTS: Payouts will be available after 12:00 noon the day following the event. Sunday's payouts will be mailed.

**BRING YOUR
RELOADER**

FALL HANDICAP SPECIAL



Factory-trained MEC repairman will be on the grounds Wednesday, Thursday & Friday to make repairs, tune-up loaders and answer questions. Drop loaders off early.

LIMITED REPAIRS AVAILABLE.

— FOR YOUR CONVENIENCE, —
all reloading supplies are here on the grounds
SHOT • POWDER • WADS • PRIMERS • PARTS

GRAF'S RELOADING

GUNS  AMMO

YOUR RELOADING HEADQUARTERS!

CALL MIKE GRAF 314-308-1357



LIKE US ON FACEBOOK

GrafsReloading.com
636-946-7468

CZ All-American Trap Combo

Absolutely loaded with features at a fraction the price of its competition.

- 32" unsingle with dial-adjustable aluminum rib (50/50 to 90/10)
- 32" doubles set with 50/50 raised rib
- Ported barrels with lengthened forcing cones
- Adjustable features:
 - LOP (14 5/8" to 15 1/2")
 - Toe in/toe out
 - 4-way parallel comb
 - Trigger shoe reach (3/8" of adjustment)
- Extended, knurled chokes in a variety of constrictions (2 CYL, 2 IC, 1 UT MOD, 2 MOD, 1 IMP MOD, 2 FULL, 1 X-FULL)
- Premium internals, drop-in locking blocks and replaceable hinge pins
- Manual trigger, manual safety
- Healthy right-hand palm swell
- Hardy silver soldered ribs

**\$3,399
MSRP**

Visit www.cz-usa.com
for more details.

Ships in an Americase travel case
custom built for this shotgun:



CZ-USA
PROTECT • HUNT • COMPETE

PRE-SQUADDING INFORMATION

The MTA will offer pre-squadding for this shoot using the Internet website www.presquad.com. This is a very easy system to use which lets you pick your own squads. You can return to the website anytime to look over the pre-squadded shooters. Pre-squadding will start August 23, 2019 and end on September 14, 2019. To help reduce empty posts, all Pre-squad posts not paid the day before will be opened up at 8:00 am the next morning.

50 TARGETS PER FIELD

All events will be shot 50 targets per field. Banks are numbered from west to east. The numbers on the trap houses will not change for the duration of this shoot.

RELOCATION OF SQUADS

Please note that squad hustlers have the authority to move squads to different nearby traps at any time. This will be done in an effort to expedite the progress of events.

SHOOTERS MUST SQUAD RESPONSIBLY

Every attempt will be made to fill handicap squads. Squadding at one position in handicap events, and then actually shooting at a different position or squad can create yardage conflicts on the firing line. When squadding or returning unused posts, please remember that your actions have an impact on other shooters, in addition to yourself.

OPEN
EVERY DAY
AT
11AM

Willowes

BAR & GRILL

Located just 2 miles from the Gun Club on A-rd

The staff at Willowes would like to welcome you to our area. Our restaurant serves tender steaks, fresh seafood, hot sandwiches, and more. The food is homemade and the beer is ice-cold!

- Great Food
- Children's Menu
- Full Bar
- Happy Hour
- Keno
- Missouri Lottery
- ATM
- Pool Tables
- Darts
- Big Screen TVs
- Smoking & Non-Smoking



ENTRY

Your entry will not be considered made until you have paid. PERSONAL CHECKS WILL BE ACCEPTED IN U.S. funds only FOR THE AMOUNT OF ENTRIES. There will be a \$15.00 surcharge on each check written on a non-US bank. A shooter who has already cashiered for an event may not later enter the purses & options after that event has been called to the line. All shooters wishing to play any option must provide their Social Security number when classified. There are no compulsory options in any event.

VISA/MASTERCARD/DISCOVER & AMERICAN EXPRESS
accepted for entries, RV spaces, etc.

RIGHTS AND PRIVILEGES

The Missouri Trapshooters Association reserves the right to postpone or call off any event in this tournament and to change the time for the starting of any or all events, if in the judgement of the Shoot Management such action is necessary. In the case entries are so numerous that darkness or any other cause prevents the finish of any event the same day it is commenced, the Shoot Management reserves the right to stop shooting at any time it is deemed necessary. In this case, weather permitting, events will resume where left off at 8:00 a.m. the next day.

WHEN A SQUAD IS UP

A squad will not be held up for a tardy member. If the tardy shooter does not appear, IN THREE MINUTES, the shooter will be scratched and may be re-squadded in a later squad, subject to re-squadding penalty or allowed to make-up up to a maximum of 50 targets.

ATTENTION SHOOTERS

1. Daily Fees: ATA - \$3.00, MTA - \$2.00; MTA Maintenance Fee - \$1.00 per 100.
2. All guns must be unloaded with the action open at all times, except on the firing line.
3. ATA ruling on alcoholic beverages and drugs will be enforced.
4. The management reserves the right to refuse entry or disqualify anyone who interferes with the harmony of the shoot.

**PREMIUM SHELL UPGRADE AVAILABLE
ON ALL MTA SHELL VOUCHERS**

CLASSIFICATION

All shooters MUST have their plastic ATA card and a complete list of their 16-yard and doubles scores and averages up to date. Classification will be based on average and known ability. Shooters must shoot Class B or higher if they have shot less than 500 registered 16-yard targets or at 23-yard handicap (minimum) if they have shot less than 500 handicap targets in the 2019 & 2020 target years. Shooters must shoot Class B or higher if they have shot less than 500 registered doubles in the 2019 & 2020 target years. Senior Veterans are exempt from penalties.

SINGLES

98% and Over AAA
96.25% and Under 98%.....AA
94.75% and Under 96.25%.. A
93% and Under 94.75% B
90% and Under 93% C
Under 90% D

Winners and Ties will advance one class

DOUBLES

96% and Over AAA
92% and Under 96%..... AA
89% and Under 92%. A
86% and Under 89% B
82% and Under 86% C
Under 82% D

Winners and Ties will advance one class

The ATA Rules will govern all points not otherwise provided. If you win your class in any event or earn yardage in any Handicap, it is your responsibility to report such to the classification committee. Winners and ties move up in class starting with Event 12. In all events that include class advances all shooters (regardless of category) with scores that equal or exceed the score of the class champion will be advanced starting with the next like event. A shooter whose class or yardage is changed for any reason shall be considered notified when the new class or yardage is posted on the bulletin board

ENTERTAINMENT FOR THE LADIES & GENTS

Trip to the Isle of Capri Casino - Friday, September 28

Includes \$5.00 in tokens - Free Lunch Ticket

Bus will leave approximately 9:00 am and return at 5:00 pm

Be sure to sign up prior to departure at front desk

Free Bingo will be provided Friday and Saturday at 1:00 pm

YOUTH BENEFIT SILENT AUCTION & YOUTH LEWIS OPTIONS

A Silent auction to benefit Missouri's youth trapshooters will be held in the clubhouse during the shoot. A variety of youth trapshooting activities benefit from this auction, including the youth scholarship program, youth teams representing Missouri at the Grand American and the Annual High School Championship in April. Bidding will end Saturday evening.

The Youth Lewis Option in events 15, 17, 20, 21, 22, 23 & 24 are a continuing source of funds for Missouri's youth shooters. One half of all entry fees in this option are used to help fund youth trapshooting programs, and the other half is paid back to winners.

NOTE

THERE WILL BE A

"BLACKBOARD EVENT"

SATURDAY FOR SUNDAY'S HANDICAP

IT WILL BE SET-UP IN CASHIER'S ROOM FROM NOON UNTIL 6:00 PM.

May 22 = 27

THE STOCK SHOP

Custom Gunsmithing

Come See Our Variety of SHAMROCK LEATHER PRODUCTS

Gunfitting

Laser Targeting System

Hard & Soft-top Combs

R.A.D. Systems

4-way Adjustable Combs

Gracoil Systems

Mercury Recoil Reducers

KICK-EEZ Pads

2 Sister's Magnetic Gun Rests

Barrel Taco

*Adjustable
Replacement
Hardware
for
Browning
and
Beretta
Shotguns*

***“Get ‘er done at
the Stock Shop”***

Tom & Ann Dee Larkin

121 Gates Avenue • Kenyon, MN 55946

Shop: 507-789-5523

Cell: 507-254-4694 or 507-838-5318

www.thestockshop.net

*See You in 2020 at the Arizona Winter Chain
Have a Safe Winter!*

TRAILER HOOKUPS

Accommodations for 329 trailers with electric and water hookups are \$140.00 per shoot. *Advanced reservations are required.* Please call first to be put on RV list. Availability is accepted by request date and must be confirmed by Management. *Do not send money* until confirmed spot is acknowledged. A dump station is located on the grounds. Showers and rest rooms are open 24 hours during the shoot. Commercial space with electricity is \$100.00 for 20-foot space. No company will be allowed more than one space. All awnings, stakes, tables and signs must be kept behind the electrical post. Advance reservations accepted upon receipt of \$100.00. No additional fee for living quarters.

GOLF CART – ATV RULES

Before operating a golf cart/ATV on the grounds you must obtain a permit from the MTA office which will be available at no cost. To obtain a permit you must produce a valid driver's license and proof of \$300,000 "off premises" liability insurance coverage on privately owned *carts or ATV's*. No one may operate a cart unless they possess a valid driver's license. Your cooperation in these rules will help maintain safety and will be greatly appreciated.

GOLF CART RENTALS

Golf carts will only be available for rental with ADVANCE RESERVATIONS prior to September 18th and deposit. Call the MTA office 573-346-2449 for further details and to make your reservations prior to September 15th.

SHELLS

Shells will be for sale on the grounds at competitive prices. No shell sales other than by MTA. If you wish to save your hulls for reloading, please transfer them from your gun to your pocket or box. Picking up hulls will not be tolerated at any time, we encourage you not to drop shells on the ground to assist our scorers. All shells must conform to ATA specifications. Shoot Management reserves the right to inspect any shells. Any loads that disturb the harmony of the Shoot will be investigated; and, if necessary, the shooter will be re-squadded or disqualified.

PRACTICE ROUNDS

Four practice traps will be available. Practice fields are subject to use for registered shooting if circumstances dictates. Pattern Board available at Bank 2, donated by Downrange Manufacturing.

FORD PURSES

The winner of each sub-event and the total will receive the \$2.00 entry fees. Ford purses will be decided by reverse score system where a winner has not been determined. Total will divide. Any shooter winning one of the first four Ford purses will not be eligible to win another except total.

HOT DOG ROAST

On Thursday evening, immediately after Event 15, the vendors have generously donated a "Hot Dog Roast" for all shooting participants and their families, sponsored by Bob Schultz Target Shotguns.

FIREARMS FOR WOMEN. NO MORE COMPROMISES.



You wouldn't wear his shoes. So why shoot his gun?

Syren is the first and only brand of firearms designed exclusively for Women.
Each Syren shotgun is as elegant and unique as its owner. A perfect fit.

For more info visit us at SyrenUSA.com or call 410-901-1131

#1 FABRICATOR IN THE NATION



BORN AND BUILT IN AMERICA FOR OVER 60 YEARS

For over 60 years in the shooting industry we've been manufacturing and creating the best top quality American made products. And as the #1 fabricator in the nation for eight years running, you can be sure you are getting a top quality product that will last for years to come. All from The Brand You Trust.



CLAY TARGET MACHINES



SHOTSHELL RELOADERS



METALLIC RELOADER



OUTDOORS

800-797-4632

mecoutdoors.com



©2019 Mayville Engineering Company, Inc. All Rights Reserved

NEW LEFT EJECT RS300 TARGET

LR
LEFT HAND RIGHT HAND™

Adjustable
Butt Plate
System

Adjustable
Comb
Hardware

Adjustable
Stock Shim
System

Standard
& Youth
Lengths
Stocks

\$1049.00 msrp



SKB SHOTGUNS
4441 S. 134TH Street
Omaha, NE 68137
www.skbshotguns.com
1-800-752-2767

Missouri Fall 1

September 21-22-23-24

Beginning Monday morning, squadding and cashing will be for

ATA Daily Fee of \$3.00, MTA Daily Fee of \$2.00,

Saturday, September 21

Practice Traps Open at 8:00 am • Program Starts at 9:00 am

FIRST PRELIMINARY DAY

EVENT 1

200 16 - YARD TARGETS

(1st 100 Saturday – 2nd 100 Sunday)

ENTRY Targets & Trophies (\$47.40), Sales Tax (\$2.60) \$70.00

OPTIONS

1st Lewis (4 divisions, 1 money each)..... \$15.00

2nd Lewis (4 divisions, 1 money each)..... \$15.00

You may enter only the 2nd 100 if you wish and play the 2nd 100 Lewis

TROPHIES - SHELLS ON THE TOTAL 200 TARGETS

Champion

Class AAA, AA, A, B, C, D,

Lady, Sub-Junior, Junior, Veteran, Senior Veteran

EVENT 2

100 HANDICAP TARGETS

ENTRY Targets & Trophies (\$23.70), Sales Tax (\$1.30)..... \$35.00

OPTIONS

Lewis (4 divisions, 1 money each) \$15.00

TROPHIES - SHELLS

Champion,

Yardage Winner (19-20.5, 21-23.5, 24-26.5, 27)

Lady, Sub-Junior, Junior, Veteran, Senior Veteran

EVENT 3

50 PAIR DOUBLES TARGETS

ENTRY Targets & Trophies (\$23.70), Sales Tax (\$1.30)..... \$35.00

OPTIONS

Lewis (4 divisions, 1 money each) \$15.00

TROPHIES - SHELLS

Class AAA, AA, A, B, C, D,

Lady, Sub-Junior, Junior, Veteran, Senior Veteran

Handicap Shoot

24-25-26-27-28-29, 2019

for the same day only until 12:00 noon, for the duration of the shoot

and MTA Maintenance Fee of \$1.00 per 100 Targets

Sunday, September 22

Practice Traps Open at 8:00 am • Program Starts at 9:00 am

SECOND PRELIMINARY DAY

EVENT 1 (Conclusion)

200 16 - YARD TARGETS

(1st 100 Saturday – 2nd 100 Sunday)

ENTRY Targets & Trophies (\$47.40), Sales Tax (\$2.60) \$70.00

OPTIONS

1st Lewis (4 divisions, 1 money each)..... \$15.00

2nd Lewis (4 divisions, 1 money each)..... \$15.00

You may enter only the 2nd 100 if you wish and play the 2nd 100 Lewis

TROPHIES - SHELLS ON THE TOTAL 200 TARGETS

Champion

Class AAA, AA, A, B, C, D,

Lady, Sub-Junior, Junior, Veteran, Senior Veteran

EVENT 4

100 HANDICAP TARGETS

ENTRY Targets & Trophies (\$23.70), Sales Tax (\$1.30)..... \$35.00

OPTIONS

Lewis (4 divisions, 1 money each) \$15.00

TROPHIES - SHELLS

Champion

Yardage Winner (19-20.5, 21-23.5, 24-26.5, 27)

Lady, Sub-Junior, Junior, Veteran, Senior Veteran

EVENT 5

50 PAIR DOUBLES TARGETS

ENTRY Targets & Trophies (\$23.70), Sales Tax (\$1.30)..... \$35.00

OPTIONS

Lewis (4 divisions, 1 money each) \$15.00

TROPHIES - SHELLS

Champion

Class AAA, AA, A, B, C, D,

Lady, Sub-Junior, Junior, Veteran, Senior Veteran

Monday, September 23

Practice Traps Open at 8:00 am • Program Starts at 9:00 am

THIRD PRELIMINARY DAY

EVENT 6

100 16 - YARD TARGETS

ENTRY Targets & Trophies (\$23.70), Sales Tax (\$1.30)..... \$35.00

OPTIONS

\$5.00 each 50 – 100% (open)..... \$15.00

4 Lewis Divisions – 100% each \$15.00

TROPHIES - SHELLS

Class AAA, AA, A, B, C, D,

Lady, Sub-Junior, Junior, Veteran, Senior Veteran

EVENT 7

100 HANDICAP TARGETS

ENTRY Targets & Trophies (\$23.70), Sales Tax (\$1.30)..... \$35.00

OPTIONS

\$2.50 each 25 – (1 money, ties divide)..... \$10.00

\$5.00 each 50 (3) – 50%-30%-20% \$15.00

4 Lewis Divisions – 100% each \$15.00

5 Ford Purses – \$2.00 each.....\$10.00

Yardage Purse – 4 Yardage Groups (50%-30%20%)\$15.00

TROPHIES - SHELLS

Champion

Yardage Winner (19-20.5, 21-23.5, 24-26.5, 27)

Lady, Sub-Junior, Junior, Veteran, Senior Veteran

EVENT 8

50 PAIR DOUBLES TARGETS

ENTRY Targets & Trophies (\$23.70), Sales Tax (\$1.30)..... \$35.00

OPTIONS

4 Lewis Divisions – 100% each \$15.00

TROPHIES - SHELLS

Class AAA, AA, A, B, C, D,

Lady, Sub-Junior, Junior, Veteran, Senior Veteran

Tuesday, September 24

Practice Traps Open at 8:00 am • Program Starts at 9:00 am

FOURTH PRELIMINARY DAY

EVENT 9

100 16 - YARD TARGETS

ENTRY Targets & Trophies (\$23.70), Sales Tax (\$1.30)..... \$35.00

OPTIONS

\$5.00 each 50 – 100% (open)..... \$15.00

4 Lewis Divisions – 100% each \$15.00

TROPHIES - SHELLS

Class AAA, AA, A, B, C, D,

Lady, Sub-Junior, Junior, Veteran, Senior Veteran

EVENT 10

100 HANDICAP TARGETS

ENTRY Targets & Trophies (\$23.70), Sales Tax (\$1.30)..... \$35.00

OPTIONS

\$2.50 each 25 – (1 money, ties divide)..... \$10.00

\$5.00 each 50 (3) – 50%-30%-20% \$15.00

4 Lewis Divisions – 100% each \$15.00

5 Ford Purses – \$2.00 each.....\$10.00

Yardage Purse – 4 Yardage Groups (50%-30%20%)\$15.00

TROPHIES - SHELLS

Champion

Yardage Winner (19-20.5, 21-23.5, 24-26.5, 27)

Lady, Sub-Junior, Junior, Veteran, Senior Veteran

EVENT 11

50 PAIR DOUBLES TARGETS

ENTRY Targets & Trophies (\$23.70), Sales Tax (\$1.30)..... \$35.00

OPTIONS

4 Lewis Divisions – 100% each \$15.00

TROPHIES - SHELLS

Class AAA, AA, A, B, C, D,

Lady, Sub-Junior, Junior, Veteran, Senior Veteran

Wednesday, September 25

Practice Traps Open at 8:00 am • Program Starts at 9:00 am

Class Advances will begin with the results of event 12

EVENT 12

100 16 - YARD TARGETS

ENTRY Targets & Trophies (\$33.18), Sales Tax (\$1.82)..... \$35.00

OPTIONS

\$5.00 each 50 – 3-50's - ties divide.....\$15.00

\$10.00 each 100 – 60%-40% - by class \$10.00

4 Lewis Divisions – 100% each \$15.00

TROPHIES

Trophy to Champion, Winner of each Class - AAA, AA, A, B, C, D

Lady I, Lady II, Sub-Junior, Junior, Junior Gold,

Sub-Veteran, Veteran, Senior-Veteran, Chair Shooter

Starting With Event 12, 1ST EVENT Each Day

Sign-up in First Two Flights and be Placed in Drawing for a Flat of Shells

1 Flat in First Flight and 1 Flat in 2nd Flight

EVENT 13

100 HANDICAP TARGETS

ENTRY Targets & Trophies (\$33.18), Sales Tax (\$1.82)..... \$35.00

OPTIONS

\$2.50 each 25 – 1 money, ties divide \$10.00

\$5.00 each 50 (3-50's) – 50%-30%-20%, ties divide \$15.00

6 Way Purse – 25%-15%-10%-25%-15%-10%, ties divide \$15.00

4 Yardage Groups – 50%-30%-20%, ties divide..... \$15.00
each group shoots for own money

4 Lewis Divisions – 100% each \$15.00

TROPHIES

Champion, Runner-up

Yardage Winner (19-20.5, 21-23.5, 24-26.5, 27)

Lady I, Lady II, Sub-Junior, Junior, Junior Gold,

Sub-Veteran, Veteran, Senior-Veteran, Chair Shooter

EVENT 14

50 PAIR DOUBLES TARGETS

ENTRY Targets & Trophies (\$33.18), Sales Tax (\$1.82)..... \$35.00

OPTIONS

4 Lewis Divisions – 100% each \$15.00

TROPHIES

Trophy to Champion, Winner of each Class - AAA, AA, A, B, C, D

Lady I, Lady II, Sub-Junior, Junior, Junior Gold,

Sub-Veteran, Veteran, Senior-Veteran, Chair Shooter



CENTURY III



A Single Barrel Designed To Fit you!

- Adjustable Butt Plate
- Adjustable Comb
- Standard & Youth Lengths



\$1529.00 msrp



skbshotguns.com 1-800-752-2767

SUBSCRIBE TODAY!
1 Year for \$25



Shotgun Sports
MAGAZINE

800-676-8920
CALL NOW! Mention Code: M019

(530) 889-2220 • Fax (530) 889-9106 • P.O. Box 6810, Auburn, CA 95604

A 1-year subscription (12 GREAT issues) is regularly \$32.95!

Digital subscriptions available online. To view a free issue visit
www.shotgunsportsmagazine.com

and check out our Shootin' Accessories.

Thursday, September 26

Practice Traps Open at 7:30 am • Program Starts at 8:30 am

EVENT 15

LAKE OZARK HANDICAP

100 HANDICAP TARGETS

ENTRY Targets & Trophies (\$33.18), Sales Tax (\$1.82)..... \$35.00

OPTIONS

MTA HIGH GUN GUARANTEED PURSE..... \$15.00

\$500.00 HIGH-GUN GUARANTEED

1st Place.....\$250.00

2nd Place.....\$150.00

3rd Place.....\$100.00

For each 7 entries over 34, \$100.00 will be added beginning with 4th Place

6 Way Purse – 25%-15%-10%-25%-15%-10%, ties divide \$15.00

\$2.50 each 25 – 1 money, ties divide \$10.00

\$5.00 each 50 (3-50's) – 50%-30%-20%, ties divide \$15.00

4 Yardage Groups – 50%-30%-20%, ties divide..... \$15.00
each group shoots for own money – 19-20, 21-23, 24-26, 27

4 Lewis Divisions – 100% each \$15.00

Missouri Youth Program Lewis Class \$15.00

Events 15, 17, 20, 21, 22, 23 & 24 feature this option. \$7.50 of each entry will further youth trapshooting in Missouri, the remaining \$7.50 will be paid out in four Lewis Divisions, 100%, ties divide

TROPHIES

Champion, Runner-up, Yardage Winner (19-20.5, 21-23.5, 24-26.5, 27)

Winner to Lady I, Lady II, Sub-Junior, Junior, Junior Gold,

Sub-Veteran, Senior Veteran, Chair Shooter.

HOT DOG ROAST

Thursday Evening

SPONSORED BY BOB SCHULTZ

Thanks Bob!

EVENT 16

50 HANDICAP TARGETS

(Non-Registered)

Shot immediately following and from the same yardage as Event 15

ENTRY Targets, compulsory purses and Tax (\$.82)..... \$60.00

Purses Included in Entry Fee

\$10.00 on Total – 50%-30%-20%, ties divide

\$20.00 by Yardage Group – 50%-30%-20%, ties divide
19-20, 21-23, 24-26, 27

\$10.00 Lewis – 4 Divisions, one money each

EVENT 17

BAGNELL DAM HANDICAP

100 HANDICAP TARGETS

ENTRY Targets & Trophies (\$33.18), Sales Tax (\$1.82)..... \$35.00

OPTIONS

MTA HIGH GUN GUARANTEED PURSE..... \$15.00

\$500.00 HIGH-GUN GUARANTEED

1st Place.....\$250.00

2nd Place.....\$150.00

3rd Place.....\$100.00

For each 7 entries over 34, \$100.00 will be added beginning with 4th Place

4 Lewis Divisions – 100% each \$15.00

6 Way Purse – 25%-15%-10%-25%-15%-10%, ties divide \$15.00

\$2.50 each 25 – 1 money, ties divide \$10.00

\$5.00 each 50 (3-50's) – 50%-30%-20%, ties divide \$15.00

4 Yardage Groups – 50%-30%-20%, ties divide \$15.00

each group shoots for own money – 19-20, 21-23, 24-26, 27

Missouri Youth Program Lewis Class \$15.00

Events 15, 17, 20, 21, 22, 23 & 24 feature this option. \$7.50 of each entry will further youth trapshooting in Missouri, the remaining \$7.50 will be paid out in four Lewis Divisions, 100%, ties divide

TROPHIES

Champion, Runner-Up

Yardage Winner (19-20.5, 21-23.5, 24-26.5, 27)

Winner to Lady I, Lady II, Sub-Junior, Junior, Junior Gold,

Sub-Veteran, Veteran, Senior Veteran, and Chair Shooter



Great selection of **Wads!**

New and Used Hulls too!



When Shipping Primers,
Haz Mat Fee Applies

We have
the **Powder**
for you!



When Shipping Powder, Haz Mat Fee Applies



WHITE FLYER
TARGETS

We are now a White
Flyer Distributor!

Available for Dealers and gun clubs located in
Missouri, Kansas, Oklahoma, and Southern Illinois.



GRAF'S RELOADING SUPERCENTER

GUNS • AMMO • ARCHERY • RELOADING

Graf's Reloading Supercenter • 4132 S Clark St
Mexico, MO 65265 • Phone: **573-581-9777**



GRAF & SONS

THE RELOADING AUTHORITY

Graf & Sons, Inc • 4050 S Clark

Mexico, MO 65265 • Phone: **800-531-2666**

Web: Grafts.com

GIPSON RICKETTS, LLC
LEAD RECLAMATION



LEAD SHOT RECLAMATION

We provide lead recovery services to gun clubs and
shooting ranges for any size nationwide.

Turning "Gray" to "Green" since 2007
Over 20 MILLION POUNDS harvested!

- Our management team has over 60 years of experience in shooting sports management, construction management and heavy equipment operation. We are uniquely qualified to efficiently maximize your lead harvest and negotiate the best possible price for the sale of your lead.
- Our work schedule will be set around yours, not the other way around. We have the availability to work not only during the day, but also at night with lights. You will be able to continue with your target shooting schedule and events while we are on site.

Contact us

WE WILL MAXIMIZE YOUR RETURN

816.547.4382 • www.gipsonricketts.com • 816.863.9003

kctalag@yahoo.com or srickett@sbcglobal.net

**PROUD GRAND AMERICAN &
AIM TITLE SPONSOR**

Friday, September 27

Practice Traps Open at 7:30 am • Program Starts at 8:30 am

EVENT 18

GIPSON-RICKETTS HANDICAP

100 HANDICAP TARGETS

ENTRY Targets & Trophies (\$33.18), Sales Tax (\$1.82)..... \$35.00

OPTIONS

MTA HIGH GUN GUARANTEED PURSE..... \$15.00

\$500.00 HIGH-GUN GUARANTEED

1st Place.....\$250.00

2nd Place.....\$150.00

3rd Place.....\$100.00

For each 7 entries over 34, \$100.00 will be added beginning with 4th Place

4 Lewis Divisions – 100% each \$15.00

6 Way Purse – 25%-15%-10%-25%-15%-10%, ties divide \$15.00

\$2.50 each 25 – 1 money, ties divide..... \$10.00

\$5.00 each 50 (3-50's) – 50%-30%-20%, ties divide \$15.00

4 Yardage Groups – 50%-30%-20%, ties divide..... \$15.00

each group shoots for own money – 19-20, 21-23, 24-26, 27

TROPHIES

Champion, Runner-up

Yardage Winner (19-20.5, 21-23.5, 24-26.5, 27)

Lady I, Lady II, Sub-Junior, Junior, Junior Gold,

Sub-Veteran, Veteran, Senior-Veteran, Chair Shooter

EVENT 19

50 HANDICAP TARGETS

(Non-Registered)

Shot immediately following and from the same yardage as Event 18

ENTRY Targets, compulsory purses and Tax (\$.82)..... \$60.00

Purses Included in Entry Fee

\$10.00 on Total – 50%-30%-20%

\$20.00 by Yardage Group – 50%-30%-20%, ties divide

19-20, 21-23, 24-26, 27

\$10.00 Lewis – 4 Divisions, one money each

EVENT 20

BOB GRAF HANDICAP

100 HANDICAP TARGETS

40 FLATS OF SHELLS

Donated by Graf & Sons
4 Yardage Groups, Ties Divide

ENTRY Targets & Trophies (\$33.18), Sales Tax (\$1.82)..... \$35.00

OPTIONS

MTA HIGH GUN GUARANTEED PURSE..... \$15.00

\$500.00 HIGH-GUN GUARANTEED

1st Place.....\$250.00

2nd Place.....\$150.00

3rd Place.....\$100.00

For each 7 entries over 34, \$100.00 will be added beginning with 4th Place

6 Way Purse – 25%-15%-10%-25%-15%-10%, ties divide..... \$15.00

\$2.50 each 25 – 1 money, ties divide \$10.00

\$5.00 each 50 (3-50's) – 50%-30%-20%, ties divide \$15.00

4 Yardage Groups – 50%-30%-20%, ties divide..... \$15.00
each group shoots for own money – 19-20, 21-23, 24-26, 27

4 Lewis Divisions – 100% each \$15.00

Missouri Youth Program Lewis Class \$15.00

Events 15, 17, 20, 21, 22, 23 & 24 feature this option. \$7.50 of each entry will further youth trapshooting in Missouri, the remaining \$7.50 will be paid out in four Lewis Divisions, 100%, ties divide

TROPHIES

Champion, Runner-up

Yardage Winner (19-20.5, 21-23.5, 24-26.5, 27)

Lady I, Lady II, Sub-Junior, Junior, Junior Gold,
Sub-Veteran, Veteran, Senior-Veteran, Chair Shooter

BLACKBOARD EVENT

*Place a bid on the blackboard,
bids close at 6:00 pm*

Saturday, September 28

Practice Traps Open at 7:30 am • Program Starts at 8:30 am

EVENT 21

TOM ENDRES SINGLES CHAMPIONSHIP

200 16 - YARD TARGETS

ENTRY Targets & Trophies (\$66.36), Sales Tax (\$3.64) \$70.00

OPTIONS

\$2.50 each 50 – 100% (by class) \$10.00

\$5.00 each 100 – 60%-40% (by class) \$10.00

Total 200 – 50%-30%-20% (by class) \$10.00

4 Lewis Divisions – 100% each \$15.00

Missouri Youth Program Lewis Class \$15.00

TROPHIES

Champion, Runner-Up, Winner, Runner-Up in each Class (AAA, AA, A, B, C, D)

Winner, Runner-Up, to Lady I, Lady II, Sub-Junior, Junior,

Sub-Veteran, Veteran, Senior Veteran, and Chair Shooter



Making Your Camping Experience Better Since 1977!

YOUR LOCAL RV SUPERSTORE

Only 15 minutes from the Gun Club on Highway 54

Huge parts store.

Full Service Center, with service calls available.

Large selection of New & Used RV's in stock from brands like:

JAYCO • SALEM

CEDAR CREEK • PASSPORT

ROCKWOOD • XLR

Trading is Welcomed ~ Family Owned & Operated

No Pressure Sales

View all of our inventory online 24 hours a day at

www.qualityrv.net

Phone 573-317-1001 or 877-317-1001



Richard Marshall, Jr.

trap

TALENT IS NATURAL... EXCELLENCE IS A CHOICE

We've all met that shooter who can pick up a gun and break targets with little or no coaching, right? But to break targets consistently takes dedication to the sport and a good coach, not just natural talent.

Spend an hour or more with a coach like Rick Marshall and he'll tell you that it's not only coaching that will help your shooting, but the consistency of White Flyer targets. The target that world class shooters prefer for all shooting disciplines.

"I've been teaching youth shooters for 20+ years and White Flyer Targets are the most consistent target to use. If you're going to shoot - shoot the BEST! White Flyer!"

Richard Marshall Jr.



Dad giving me pointers!



Richard's accomplishments include:

- 4 Time Grand American Champion
- 25 Time ATA All American
- 50 Satellite Grand Championships
- 400X400 2013 Western Grand HAA
- 2015 ATA Hall of Fame Member
- Head Shooting Coach-Doane University

Visit www.nssf.org to find a shooting facility near you, and give Richard a call at 702-499-6210, or visit www.richardmarshalljr.com to schedule a lesson, and start making your White Flyer memories today!

WHITE FLYER TARGETS . . . Proudly Supplying Targets to Pros, First Time Shooters and Families for Over 125 Years

WHITE FLYER

Continuing the Legacy



West 800-872-7888 East: 800-423-6077 North Central: 574-772-3271 Midwest: 800-647-2898
1300 Post Oak Blvd. Ste. 680 Houston, TX 77056 800.322.7855 www.whiteflyer.com

EVENT 22

WHITE FLYER HANDICAP

100 HANDICAP TARGETS

ENTRY Targets & Trophies (\$33.18), Sales Tax (\$1.82)..... \$35.00
Trophies same as Event 13

OPTIONS

MTA HIGH GUN GUARANTEED PURSE..... \$20.00

\$1,000.00 HIGH-GUN GUARANTEED

1st Place.....\$500.00
2nd Place.....\$300.00
3rd Place.....\$200.00

For each 7 entries over 50, \$105.00 will be added beginning with 4th Place

4 Lewis Divisions -- 100% each..... \$15.00
\$2.50 each 25 -- 1 money, ties divide..... \$10.00
\$5.00 each 50 (3-50's) -- 50%-30%-20%, ties divide..... \$15.00
6 Way Purse -- 25%-15%-10%-25%-15%-10%, ties divide..... \$15.00
4 Yardage Groups -- 50%-30%-20%, ties divide..... \$15.00
Missouri Youth Program Lewis Class..... \$15.00

TROPHIES

Champion, Runner-up
 Yardage Winner (19-20.5, 21-23.5, 24-26.5, 27)
 Lady I, Lady II, Sub-Junior, Junior, Junior Gold,
 Sub-Veteran, Veteran, Senior-Veteran, Chair Shooter



13547 Missouri Bottom Rd.
 Bridgeton, MO 63044
 Phone: 314-344-1050
 Toll Free: 888-344-1050
 E-mail: manager@gatewaygunclub-stl.com
www.gatewaygunclub-stl.com
 See Our Website for Club Directions

~ Club is handicap accessible ~

2019 Registered Shoots

May 11 -- Regular Monthly Shoot Sept. 14-15 -- 2019 Eastern Zone Shoot
 June 15 -- Regular Monthly Shoot Oct. 12 -- Regular Monthly Shoot
 July 13 -- Regular Monthly Shoot

NOW OPEN!

**Our New
 Indoor Pistol Range
 &
 Bunker Trap Field**

OPEN 7 DAYS A WEEK -- SEE WEBSITE FOR HOURS

9 combination trap & skeet fields + 2 trap fields - total, 10 program traps & 1 practice
 All fields have Pat-Trap with CRV releases & lights for evening shooting

We Have Trap, Bunker Trap, Wobble Trap, Skeet & International Skeet



Experience the Difference!

From 410 to 12 gauge, we have you covered.

downrangemfg.com (402) 463-3415

Sunday, September 29

Practice Traps Open at 7:30 am • Program Starts at 8:30 am

EVENT 23

DOWNRANGE DOUBLES CHAMPIONSHIP

50 PAIR DOUBLES TARGETS

ENTRY Targets & Trophies (\$33.18), Sales Tax (\$1.82)..... \$35.00

OPTIONS

\$10.00 each 50 (2) – 60%-40% - by class..... \$20.00

\$10.00 on Total – 60%-40% - by class..... \$20.00

4 Lewis Divisions – 100% each..... \$15.00

Missouri Youth Program Lewis Class..... \$15.00

Events 15, 17, 20, 21, 22, 23 & 24 feature this option. \$7.50 of each entry will further youth trapshooting in Missouri, the remaining \$7.50 will be paid out in four Lewis Divisions, 100%, ties divide

TROPHIES

Champion, Runner-Up

Winner, Runner-Up in each Class (AAA, AA, A, B, C, D).

Winner and Runner-up in each Category,

Lady I, Lady II, Sub-Junior, Junior, Junior Gold,

Sub-Veteran, Veteran, Senior Veteran, and Chair Shooter.

Unleaded and Diesel Gas

Grocery, Beer, Liquor,

Tobacco Products, Lottery,

Bait and Fishing Tackle, Ice,

Soda, Soft-served Ice Cream and More!

*We now have Hunts Brothers
Pizza & Chicken*

JUST
A-LITTLE STORE

under new ownership-family owned and operated

1.8 miles down A-Road off Hwy 54

Store Hours:

Mon-Sat 6am-9pm, Sun-6am-8pm

573-873-2395

Wenig

Custom Gunstocks, LLC

Finest Stockmakers in the Industry

- Over 150 NEW Finished Stock Sets ready for sale
- HC-2 Available for most popular actions
- Close-Out Pricing on selected finished stocks



CUSTOM LEATHER ACCESSORIES



**CUSTOM
FITTING
SPECIALS**
Call ahead
for Fitting
Appointments



103 N. Market St. • Lincoln, MO 65338 • 660.547.3334
www.wenig.com • gunstock@wenig.com

EVENT 24

WENIG CUSTOM GUNSTOCKS HANDICAP CHAMPIONSHIP

100 HANDICAP TARGETS

ENTRY Targets & Trophies (\$33.18), Sales Tax (\$1.82)..... \$35.00

MTA HIGH GUN GUARANTEED PURSE..... \$30.00

\$2,500.00 HIGH-GUN GUARANTEED

1st Place..... \$1,200.00

2nd Place..... \$ 800.00

3rd Place..... \$ 500.00

For each 7 entries over 85, \$200.00 will be added beginning with 4th Place

OPTIONS

4 Lewis Divisions – 100% each \$15.00

\$2.50 each 25 – 1 money, ties divide \$10.00

\$5.00 each 50 (3-50's) – 50%-30%-20%, ties divide \$15.00

6 Way Purse – 25%-15%-10%-25%-15%-10%, ties divide \$15.00

4 Yardage Groups – 50%-30%-20%, ties divide..... \$15.00

Missouri Youth Program Lewis Class \$15.00

TROPHIES

Champion, Runner-up

Yardage Winner and Runner-up (19-20.5, 21-23.5, 24-26.5, 27)

Winner and Runner-up; Lady I, Lady II, Sub-Junior, Junior, Junior Gold,
Sub-Veteran, Veteran, Senior-Veteran, Chair Shooter

HIGH ALL AROUND

EVENTS 21, 23 & 24

\$50.00 will be given to each:

Champion, Class AAA, AA, A, B, C, D,

Lady I, Lady II, Sub-Junior, Junior, Junior Gold,

Sub-Veteran, Veteran, Senior-Veteran, Chair Shooter

(Classification determined by Event 15)

HIGH OVER ALL

REGISTERED EVENTS 12-15, 17-18, 20-24 – 1,200 TARGETS

10 Boxes of Shells given to winner in each class:

Champion, AAA, AA, A, B, C, D,

Lady I, Lady II, Sub-Junior, Junior, Junior Gold,

Sub-Veteran, Veteran, Senior-Veteran, Chair Shooter

(Classification determined by Event 12)

MISSOURI TRAPSHOOTER ASSN.
51 Trapsshooters Road
Linn Creek, MO 65052

~~~~~  
**1,100 HANDICAP ~ 700 SINGLES ~ 600 DOUBLES**  
**ALL PAT-TRAPS**

**Saturday, Sept. 21**

**FIRST PRELIMINARY DAY**

100 Singles • 100 Handicap  
50 Pair Doubles

**Sunday, Sept. 22**

**SECOND PRELIMINARY DAY**

100 Singles • 100 Handicap  
50 Pair Doubles

**Monday, Sept. 23**

**THIRD PRELIMINARY DAY**

100 Singles • 100 Handicap  
50 Pair Doubles

**Tuesday, Sept. 24**

**FOURTH PRELIMINARY DAY**

100 Singles • 100 Handicap  
50 Pair Doubles

**Wednesday, Sept. 25**

100 Singles • 100 Handicap  
50 Pair Doubles

**Thursday, Sept. 26**

**LAKE OZARK HANDICAP**

(100 Handicap)

**N/R WOLF**

(50 Handicap)

**BAGNELL DAM HANDICAP**

(100 Handicap)

**Friday, Sept. 27**

**GIPSON-RICKETTS HANDICAP**

(100 Handicap)

**N/R WOLF**

(50 Handicap)

**BOB GRAF HANDICAP**

(100 Handicap)

**Saturday, Sept. 28**

**TOM ENDRES CHAMPONSHIP**

(200 Singles)

**WHITE FLYER HANDICAP**

(100 Handicap)

**Sunday, Sept. 29**

**DOWNRANGE  
DOUBLES CHAMPIONSHIP**

**WENIG CUSTOM GUNSTOCKS  
HANDICAP CHAMPIONSHIP**

(100 Handicap)